



# SCHOOL LEAVER GUIDE

# WHY CHOOSE WORSLEY COLLEGE?

  
**Ofsted**  
**GOOD**  
**RATING**  
DECEMBER 2019

**100%**  
**PASS**  
**RATE**

**AWARD**  
**WINNING**  
**RESTAURANT**



**100 YEARS**  
OF EDUCATIONAL  
EXCELLENCE  
& COMMUNITY  
SUPPORT

**STATE-OF-**  
**THE-ART**  
**FACILITIES**

**HAIR & BEAUTY**  
**TRAINING SALON**

**OUTSTANDING**  
WORK PLACEMENTS  
WITH **PRESTIGIOUS**  
ORGANISATIONS 

**100%**  
**OF STUDENTS**  
**FEEL SAFE**  
**AT THE COLLEGE\***

\*ACCORDING TO THE STUDENT  
SATISFACTION SURVEY 2020

  
NURSERY







# CONTENTS

- 2** Courses Offered at Worsley College
- 3** Welcome from the Head of College
- 4** History of the College
- 5** The Worsley Way
- 6** What Ofsted Say
- 7** State-of-the-art Facilities
- 8** Teachers Who Love to Teach
- 9** Students Who Love to Learn
- 10** Outstanding Results
- 11** High Achievers
- 12** Trips & Visits
- 13** Industry Links
- 14** Personal & Academic Support
- 15** Student Council
- 16** College Life
- 18** Business
- 20** Early Years Childcare
- 22** Hairdressing, Beauty Therapies & Media Make-up
- 24** Aspirations Salon
- 26** Health & Social Care
- 28** Hospitality & Culinary Arts
- 30** The Glass House at Worsley
- 32** Passport to College
- 33** The Prince's Trust Team Programme
- 34** English & Maths
- 35** Apprenticeships at Salford City College
- 37** Travelling to College
- 38** Application Process

Walkden Road  
Worsley  
M28 7QD

0161 631 5005  
enquiries@salfordcc.ac.uk

 /WorsleyCollege

 @WorsleyCollege

 @WorsleyCollege

# COURSES OFFERED

## AT WORSLEY COLLEGE

HEALTH &  
SOCIAL  
CARE

BUSINESS  
& TRAVEL

HAIRDRESSING,  
BEAUTY  
THERAPIES  
& MEDIA  
MAKE-UP

THE PRINCE'S  
TRUST TEAM  
PROGRAMME

PASSPORT TO  
COLLEGE

HOSPITALITY &  
CULINARY ARTS

EARLY YEARS  
CHILDCARE

All of our students progress onto one of the following after college:

 APPRENTICESHIPS  
AT SALFORD CITY COLLEGE

COURSE  
RELATED  
EMPLOYMENT

 UNIVERSITY  
CENTRE  
AT SALFORD CITY COLLEGE

OR OTHER  
UNIVERSITY  
COURSES



# WELCOME

## FROM THE HEAD OF COLLEGE

Worsley College is proud of its long-standing commitment to supporting young people in the local community. We are particularly pleased to have recently celebrated our 100<sup>th</sup> year of delivering education.

Worsley College was the first College in the country to introduce technical qualifications in 1919, and staff at the College continue to celebrate the achievements and the progress that our students have and continue to make.

We provide excellent learning opportunities delivered by some of the very best teachers in the country. All of our teaching staff are experts in their subject areas, have substantial industry experience and are passionate about supporting each and every student so that they can flourish and exceed expectations.

We are committed to supporting students in their next steps and our outstanding curriculum, pastoral, and careers team work with students at the College to facilitate pathways onto apprenticeships, Higher Education, and into employment.

We also recognise that it is important that our students feel safe and are welcomed to the College. Our teaching staff are kind, committed and want the very best for their students.

Students are allocated a Personal Tutor who will support them throughout the year. They will also be supported to develop their English and mathematics skills, independent thinking, study skills, and resilience. We have a dedicated Pastoral Support Team who work with students on an individual basis to remove barriers and support students in the best possible way.

Our outstanding pass rates reflect our vision to ensure that students at Worsley College are the best that they can be. We set high expectations for all our students, to ensure they reach their full potential. In return, our student body respond positively to the curriculum activities and contribute to the College and local community in a way that constantly evolves and inspires the work we do.

We are very proud of our students' successes and our college community, and look forward to welcoming you to Worsley College in September.

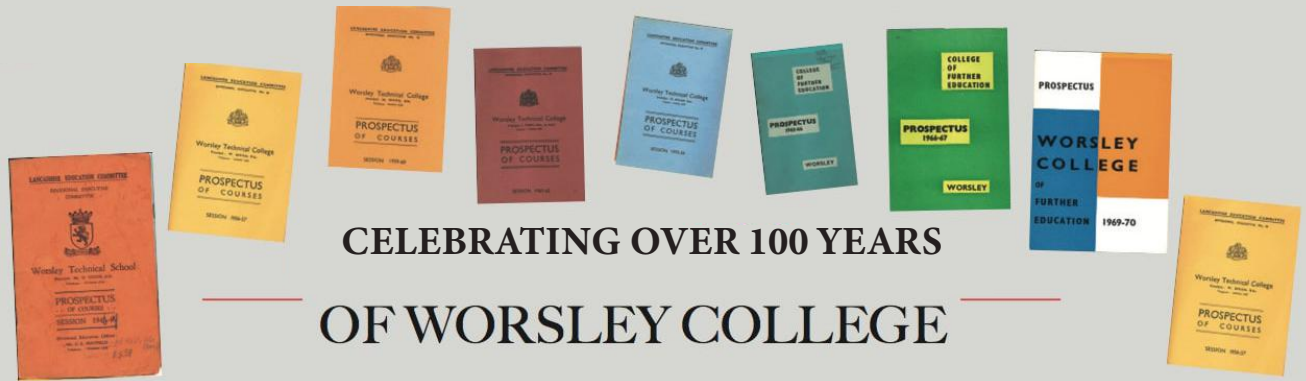


**REBECCA CROSS**  
BA (HONS), PGCE  
Head of College





# HISTORY OF THE COLLEGE



## CELEBRATING OVER 100 YEARS OF WORSLEY COLLEGE



In 1919, Worsley Technical School opened its doors to the local community. It was the first college in the country to offer professional development and training opportunities for apprentices who were learning their trade across the city. A department for secondary education was introduced in 1929 and the addition of Worsley Junior Technical School ensured that local people were supported to develop their skills at all ages.

In 1954, in response to national educational reforms, the college was renamed Worsley Technical College. The Junior and Secondary School was separated and the college began its journey as the provider of further education courses in the area.

In 1963, Worsley Technical College was renamed Worsley College of Further Education and went through a period of significant renovation and extension. In 1965, specialist rooms were added to support students to develop skills and gain qualifications in dressmaking and hairdressing and the college building was completely modernised.

In 1990, Salford College was formed and Worsley Campus (formerly Worsley Technical College) was born. In 2009, five colleges in Salford merged to become Salford City College and Worsley Campus became known as Walkden Sixth Form Centre.

On 21st April 2018, Walkden Sixth Form Centre would become known as Worsley College. This was a wonderful occasion supported by current students, staff, and members of the local community.

The words etched in the stone of our oldest building at Worsley College 'Non Nobis Solum' or 'Not for ourselves alone', epitomise and celebrate the success of every single student who has studied at the college over one hundred years of its delivery of educational opportunities.





# THE WORSLEY WAY

**W**

**WE PUT OUR STUDENTS AT THE HEART OF EVERYTHING WE DO**

**O**

**OUTSTANDING TEACHING AND LEARNING OPPORTUNITIES ARE PROVIDED FOR ALL**

**R**

**RESPECT FOR CORE VALUES AND THE REMOVAL OF BARRIERS ENABLE RICH, SUCCESSFUL OUTCOMES**

**S**

**STUDENTS AND STAFF FEEL SAFE AND SUPPORTED TO BE THE BEST THEY CAN BE**

**L**

**LEARNING EXPERIENCES ARE INSPIRATIONAL AND ENGAGING**

**E**

**EXPECTATIONS ARE BUILT ON HIGH LEVELS OF PROFESSIONAL STANDARDS**

**Y**

**OUR INDIVIDUAL COMMITMENT WILL ENABLE WORSLEY COLLEGE TO BE A BEACON OF EDUCATIONAL EXCELLENCE AND A COLLEGE THE COMMUNITY IS PROUD OF**

# WHAT OFSTED SAY

“THE HIGH GRADES STUDENTS ACHIEVE ENABLE THEM TO GAIN PLACES AT THE MOST PRESTIGIOUS UNIVERSITIES”

“THE COLLEGE HAS ESTABLISHED A CULTURE OF HIGH ASPIRATIONS FOR STUDENT ACHIEVEMENT”

“STUDENTS ENJOY THEIR TIME AT THE COLLEGE AS A RESULT OF THE GOOD TEACHING AND LEARNING AND THE EXCELLENT RANGE OF ENRICHMENT ACTIVITIES THEY PARTICIPATE IN”

“GOOD SUPPORT FOR STUDENTS IS PROVIDED AND TEACHERS WHO ALWAYS MAKE THE TIME TO HELP THEM WITH THEIR WORK AND ANY PERSONAL PROBLEMS”

“PROGRESSION TO FURTHER STUDY AND HIGHER EDUCATION IS HIGH”

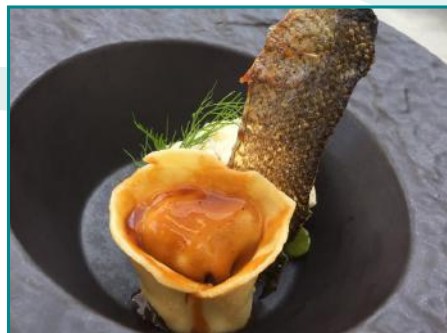
“THE SESSIONS ARE DYNAMIC, WITH ALL STUDENTS FULLY ENGAGED, FOCUSED, AND DEMONSTRATING HIGH LEVELS OF ATTAINMENT”

“THE COLLEGE ENVIRONMENT IS JUST LIKE A FAMILY THAT THEY FEEL PART OF”

“TEACHERS ARE HIGHLY ENTHUSIASTIC, PROFESSIONAL, AND HAVE EXCEPTIONAL EXPERIENCE IN THEIR SUBJECTS”



# STATE-OF-THE-ART FACILITIES



# TEACHERS WHO LOVE TO TEACH

At Worsley College, we only recruit the best. Our teaching staff are inspirational, dedicated, and experts in their field. Due to their industry experience, students receive exciting lessons that touch upon a real-life work environment, preparing them for employment or their next steps in their educational journey. Our Pastoral Support Team also ensure students are fully supported in their studies and are given all they need to reach their full potential. This is all done in a welcoming and reassuring learning environment.



## JOHN BARRY-INGLIS

CURRICULUM LEADER FOR HOSPITALITY & CULINARY ARTS

"I have more than 30 years' experience working as a professional in hotels, restaurants, inflight catering as well as running my own catering business. I have been working in Hospitality & Culinary Arts education since 2007. During this time, I have countless memories of students developing their skills and knowledge with us before blossoming into professional chefs and restauranters.

The best part of my job is having the opportunity to share my expertise with our students, striving to offer them the best start in their career."



## CLAIRE VINCENT

TEACHER OF HEALTH & SOCIAL CARE

Claire was a teacher in a secondary school in Blackburn for 13 years, before moving to Worsley College in February of 2019 to teach Passport to College. In September of 2019, Claire became a teacher of the level 2 and 3 Health & Social Care, with her specialism being in Anatomy and Physiology.

"I love teaching at Worsley College, the friendly atmosphere and the amazing students and staff make every day different."



## RACHEL BURROWS

TEACHER OF HAIRDRESSING & BEAUTY THERAPY

Rachel has over thirty years' experience in hairdressing and beauty. Starting in local salons, she progressed to international companies and promotional activities for TV and radio. With over 20 years teaching experience, she has been with the College for 11 years. She keeps up-to-date through regular training and is currently a Hair and Beauty Industry Authority ambassador.

"The best part of my teaching role at Worsley College is being in the class with the STUDENTS and helping them to achieve their goals whilst having fun. I really enjoy watching them develop their skills and confidence throughout the year, as well as helping them to recognise their progress and achievements."



# STUDENTS WHO LOVE TO LEARN

Our students take pride in their achievements, aspire to great things and are supported by teachers to be the best that they can be. They are also offered the opportunity to engage with employers through a variety of work experience opportunities and the chance to develop their personal and social skills across a series of enrichment events. We believe that it is incredibly important that we support students both personally and academically to ensure that they are well-equipped to take the next step towards their career goals.



**ALICIA PURIFICACAO**

STUDIED: BUSINESS

“I love studying here, I get to learn more about different elements of business and it is helping me to build a great foundation for when I go on to study business at University.”



**ANNE MARIE MCKINTYRE**

STUDIED: HOSPITALITY & CULINARY ARTS

“The course has helped me develop many skills that will help me get employment in the industry. I love the challenge of cooking meals for customers in The Glass House and really enjoy serving in the restaurant. I feel the skills I have developed have had a very positive effect on my level of confidence, and meeting new people has been a fantastic experience.”



**MAISIE MCAULEY**

STUDIED: HEALTH & SOCIAL CARE

“The community at Worsley College is very friendly which results in a great learning environment. I really like how encouraging the staff are to students as I feel as though they have our best interests at heart.”



**DANIELLE CAKEBREAD**

STUDIED: BEAUTY THERAPY

“The Beauty Therapy course gives you a route into a wide range of industry careers. I started the course not really knowing what I would like to be, but now I have realised that I would like to be a Spa Therapist. I really enjoy meeting new people and am gaining confidence by performing treatments on real life clients.”

# OUTSTANDING RESULTS

Our students have achieved exceptional results once again.  
We have outstanding pass rates across the board for all subjects.



100%  
PASS  
RATE

---

ACROSS ALL  
SUBJECT AREAS



# HIGH ACHIEVERS AT WORSLEY COLLEGE

At Worsley College we are extremely proud of our students high aspirations and all they achieve.



## REBECCA LLOYD

STUDIED: PROFESSIONAL COOKERY

Rebecca has studied through all three levels of hospitality and professional cookery at Worsley College. Overcoming many barriers to learning, Rebecca demonstrated exceptional levels of dedication. Participation in two high-profile culinary competitions saw Rebecca achieve a bronze medal in the Welsh Young Chef Of The Year Competition and a gold medal in the acclaimed Greater Manchester College Group's very own culinary extravaganza.

"I never thought I could do so well in the competitions; I wanted to leave college and find a job, but my teachers believed in me and helped me so much. I now want to do my level 3 in patisserie and confectionery."



## MIA HALPIN

STUDIED: HAIR, BEAUTY & MEDIA MAKE-UP

"I have loved my time at Worsley College, the teachers have been inspirational and helped me to choose a pathway that I am really looking forward to pursuing. When I started on my Beauty Therapy course last year, I never imagined that I would be applying to do a degree or studying to such a high level, but with the advice and encouragement I have received, that is exactly where I am at!"



## EMILY FORREST

STUDIED: HEALTH & SOCIAL CARE

"The support that this course has given me has been incredible and I have learnt so much. Once I have finished my course I want to go into the Army and become a medic."

# TRIPS & VISITS

Whatever course you decide to study here at Worsley College, guest speakers and visits will all be a key part of the curriculum. From residential stays in the Lake District to experience canoeing or a day at the snow park in Chill Factore, we ensure that your curriculum is enriched with experiences for you to remember for years to come. Business students study commercial aspects of theme parks, hotels, airports and recruitment agencies. Health and childcare students experience exciting science workshops and will visit Eureka museum as well as engaging playscapes for childcare.

As a Hospitality and Culinary Arts student you will visit a range of industry professionals and establishments in your time with us. Visits to the Manchester food scene will take in the French at the Midland, James Martin at Manchester 235 and the Ivy in Spinningfields. You will also be able to watch Chef and Patisserie masterclasses at venues throughout the country, including NEC Birmingham and Marriott hotels. As an aspiring young professional, you will also have extensive opportunities to take part in local and national competitions allowing you to do visits to produce farms and suppliers. This will enable you to see the full journey of a range of foods.

If you choose to study Hairdressing, Beauty Therapy or Media Make-up with us, you will have some fantastic opportunities to gain insights into how the industry works. The Hair and Beauty Department are proud of relationships with a range of professionals including: Wella, Make up for ever and Denis Williams. You will be able to visit these establishments and soak up vibrant atmospheres, industry trends and practices. Past and present guest speakers include Mark Izzard from the Avante Garde hair workshop and Jennifer Lenard, an experienced TV and film make-up artist. The department also celebrates International Women's Day, where we welcome a range of inspirational guest speakers including, Samantha Sherrington, the past Mayoress of Bolton and Gemma Betton, Beauty Trainer at the Skulpt Academy. Industry days will also inform you of the vast range of employment opportunities within your grasp and gain a firm understanding of what it will take to get there.





# INDUSTRY LINKS



## F3 AT THE ETIHAD

Also known as Fabulous Fan Fayre, F3 at the Etihad Stadium is the official events and hospitality service and restaurant at Manchester City Football Club's home ground. Their motto is, 'turning catering, hospitality, and events into an experience'.



## DENNIS WILLIAMS

Dennis Williams is a wholesaler of hair and beauty products to the industry. They also provide college kits and extra training and development to our staff and students.



## M.A.C COSMETICS

M.A.C Cosmetics has taken the industry by storm, promoting street-savvy yet glamorous and award-winning cosmetics.



## ELLISONS

Ellisons is a wholesaler of hair and beauty products to the industry. They provide college kits and training to the professional industry around the UK. The company work closely with all students and staff to ensure current trends and information are constantly updated.



## SILHOUETTE

Silhouette is a British manufacturer of beauty machines for the professional industry since 1974. They are market leaders successfully supplying Spas, Clinics, Salons and Teaching colleges. Many overseas medical centres use our products for post-operative treatments.



## SALFORD ROYAL NHS FOUNDATION TRUST

The Salford Royal NHS Foundation Trust provides safe, clean, and personal care to patients across the City of Salford. They are an integrated provider of hospital, community, primary, and social care services, including the University Teaching Trust.



## THE SPRINGBOARD CHARITY

The Springboard Charity helps young people achieve their potential and nurtures unemployed people of any age into work. It helps alleviate poverty by supporting disadvantaged and underprivileged people into sustainable employment within hospitality, leisure, and tourism.



## VETERAN'S GARAGE

Veteran's Garage provides support to military veterans within the local community, offering a social setting for advice, support, and opportunities to enhance veterans' skills.



## WELLA

Wella is an internationally renowned hairdressing company that was founded in 1880 in Germany. They have training schools all around the world, are leaders in fashion trends in hair, and have created an extensive range of professional salon products for industry use.

# PERSONAL & ACADEMIC SUPPORT

One common theme that underpins the collective experience of students at Worsley College is the support that they receive from a wonderfully dedicated team of staff. At Worsley College we recognise and are proud of the aspirations of our students. We also recognise that the transition from school to college can be daunting. We have high expectations and we want the best for our students and offer the following additional support:

## STUDENT SERVICES

We have a dedicated and supportive Student Services Team at the College. They are on hand to support all students with the following:

- Careers advice and guidance
- Financial support and guidance
- Work placement advice and guidance
- Financial support\*
- Counselling service

## PERSONAL TUTOR

Every student is assigned a personal tutor at the start of the year. They will help students with any concerns that they may have.

## LEARNING SUPPORT

We support all students who identify as having an additional learning requirement and we are committed to working with parents and guardians to ensure that we give the best possible support to the young people we are working with.

## CHAPLAINCY

We know that faith is important to many students. We have a dedicated multi-faith prayer room at college to fulfil the spiritual needs of students of faith. We are there when students of all faiths (and none) need someone to talk to. We have a safe and relaxed environment for students to follow their belief freely and have chaplains from Christianity, Islam, Hinduism, Sikhism, Judaism, and Buddhism. Those with no faith are also most welcome to come and talk to us and join in our many events including One World Week, World Aids Day, International Women's Day, and Buddha Awareness Day.

## CELEBRATION

All staff at Worsley College recognise the value of celebrating student success and we identify opportunities across the year to reward students for their attendance, work and contribution to college life, accumulating in our annual awards ceremony.

\*Subject to terms and conditions



**REBECCA CROSS**

HEAD OF WORSLEY COLLEGE

“The personal development, behaviour, and welfare of Worsley College students is my priority. My focus is on supporting the academic, social, and personal well-being of all students, ensuring high attendance and high success rates.”



**SARAH HENSON**

PASTORAL COACH

“My role is to support students on their journey at College, listening to students, providing advice and offering a range of activities to improve their wellbeing and ensure they have the best experience.”



# STUDENT COUNCIL

It is important to us that our students have a voice and make a positive contribution to the experience of their peers. It is important that students are given the opportunity to express their views on issues of concern to them. It is equally important that they are listened to and encouraged to take an active part in promoting the Worsley Way.

The Student Council is made up of a group of students who want to help improve college life. The Council is made up of students from each curriculum area, which ensures equal views and decisions are made across the college. The council meet on a regular basis to share and discuss issues and ideas that they have and this is then fed back to the college Senior Leadership Team. We believe this is vital to the development of the College as the feedback received allows us to ensure that we are providing the very best service and experiences for the students at Worsley College.

Responsibilities of the Student Council include, meeting on a regular basis to arrange events, raise money for charities, enrichment activities, and discuss issues that may have arisen. Nominated student representatives from Worsley College Student Council then attend a termly Executive Student Council meeting, which consists of representatives from other colleges in Salford.

The Student Council is voted for each academic year by the students; this gives them an opportunity to develop their confidence levels, leadership skills, event planning and ability to work collaboratively.

At Worsley College a strong sense of community is present and the students are put at the 'heart of everything we do.'



# COLLEGE LIFE

During your time at Worsley College you will have the opportunity to take part in a number of different enrichment activities. These will increase your enjoyment of college and equip you with necessary skills for your future. We have a wide range of activities on offer and these change on an annual basis to suit the needs of our current students.

## ACTIVITIES

For highly competitive university and career progression pathways, the College organises events, interactive workshops and activities led by industry professionals. These society events can give you the extra edge when applying for university courses.

Current activities include:

- Cookery classes
- Driving theory
- Film club
- First aid sessions
- Hairdressing & Beauty workshops
- Industry guest speakers
- Volunteering opportunities

Throughout the year we also host a variety of lunchtime events and activities for you to get involved in. These have included a vegetarian BBQ, Chinese and Buddhist celebrations, Red Nose Day fundraiser, Halloween celebration, and Children in Need activities. These events are a chance for you to unwind have fun with your friends and raise money for charity.

## STUDENT AMBASSADORS

Any student can become an ambassador and get involved in college events such as open days, enrolment, and enrichment activities. In recognition of this, we will reward you with a reference for university or employment.



## VOLUNTEER TASK FORCE GROUP

The College has its own Volunteer Task Force Group which is made up of environmentally conscious students who work to ensure the local community is kept clean and tidy.

Alternatively, students interested in sports volunteering can work with Salford Community Leisure or Manchester Football Association. The College works with a number of charities and students can become a volunteer and help support these worthwhile causes during their time with us.

## LGBT

We have an LGBT Group (Lesbian, Gay, Bisexual and Transgender) which provides an avenue for students, whether LGBT or not, to meet up on a regular basis. This group links with the local authority and University of Salford to raise awareness across our college.











# BUSINESS

## COURSES AVAILABLE:

LEVEL	COURSE TITLE	DURATION	ENTRY REQUIREMENTS
Level 1	Business	1 Year	Four GCSEs at Grade 2 including English language and maths
Level 2	Business	1 Year	Four GCSEs at Grade 3 or above including English and maths plus Level 2 Functional Skills in English and maths
Level 3	Business	2 Years	Five GCSEs at Grade 4 or above

Courses in this subject are available with us up to university level.





Our courses are designed for those who wish to gain an understanding of the dynamic world of business. Our aim is to equip you with the widest range of up-to-date skills that will launch your career in these cutting edge industries. You will study a wide range of business, retail, and finance related modules with a mix of theory and practical activities, equipping you with the necessary skills to perform well in industry. The course comprehensively covers finance, marketing, operation, economics and business management ensuring you are equipped for further study or employment.

### WHAT WILL I STUDY?

The business courses will explore all aspects of the business world, focusing on the core business functions such as human resource management, finance, marketing, economics and operations.

Throughout the course, we have strong links to industry with assessment and teaching tailored to ensure that learners have key business and entrepreneurial skills. The combination of key business aspects will help build your knowledge of business and help you to understand the impact that business has on our economy and in our communities.

Through key speakers, educational visits and excellent modern case studies we will explore elements of marketing including digital marketing. The course allows for flexibility from students to focus on different pathways and they can tailor their work towards the industry they want their career to be in. We will explore the diverse business industry in some units and we will analyse the world of business in depth.

The course equips students with all the necessary skills to succeed in business. To achieve this, you will be attending business conferences, introducing keynote speakers from various industries and providing excellent teaching by teachers with a passion and background in business.

### WHAT ENRICHMENT WILL THERE BE?

- Opportunities to attend trips
- Industry leading guest speakers such as Oh Polly, Boohoo, RBS, Footasylum, JD and AO.com
- Attending the largest Business Exhibitions in the North West
- Educational visits to Trafford Centre, Heaton Park, AirZone and Barclays.

### HOW ARE THE COURSES ASSESSED?

Throughout the course your teachers will make sure that you feel comfortable with your knowledge and ensure that you understand what level you are working at what you're doing well and where you might be able to improve.

There will be opportunities for you to demonstrate your knowledge, skills, and understanding in a wide range of work-related contexts, including:

- Internal Assessment
- Presentation & Class Discussions
- Practical Assessments
- Exams



**THOMAS McQUEENEY**  
TEACHER OF BUSINESS

"I love teaching at Worsley College as every student is given the chance to achieve their goals and dreams. Worsley College is a really close community of students who learn together, achieve together and excel together the Worsley Way!"



# EARLY YEARS CHILDCARE

## COURSES AVAILABLE:

LEVEL	COURSE TITLE	DURATION	ENTRY REQUIREMENTS
Level 1	Diploma in Caring for Children	1 Year	Four GCSEs at Grade 2 including English language and maths
Level 2	Diploma in Children Care Learning & Development	1 Year	Four GCSEs at Grade 3 or above including English and maths plus Level 2 Functional Skills in English and maths
Level 3	National Extended Diploma in Childcare Education (Early Years Educator)	2 Years	Five GCSEs at grade 9-4 or a Merit in a relevant Vocational Level 2 Diploma (or equivalent)

Courses in this subject are available with us up to university level.





You will have the opportunity to study in our brand new facilities, including a simulated nursery environment. You will complete a range of insightful placement experiences in Ofsted rated 'Good' and 'Outstanding' early years settings, working with a variety of age ranges between 0 - 7 years old. This will provide you with valuable skills that will enhance your studies and prepare you for employment.

### WHAT WILL I STUDY?

A range of units including:

- Children's physical, intellectual, emotional and social development
- Development of children's communication, literacy and numeracy skills
- Complete current research in early years practice
- Study around the early year's foundation stage standards
- Creative activities for children
- You will also complete your practice education portfolio documenting all your early years' experiences

### HOW ARE THE COURSES ASSESSED?

At level 1 and 2 the course is assessed by 100% coursework. Level 2 also requires students to complete 300 hours minimum, mandatory work experience in a range of early year's settings. At level 3, you will be assessed by a range of controlled assessments, examinations, coursework and complete 750 hours minimum mandatory work experience in a range of early years settings over the two years.

### WHAT ENRICHMENT WILL THERE BE?

- Talks from industry specialists. You will benefit from guest speakers from a range of vocationally relevant areas including early years practitioners
- A range of trips to enhance the early years curriculum including visits to Eureka, the theatre, Kidz to Adulz North and many more

### WHAT COULD I DO NEXT?

Be inspired to succeed and progress onto Higher Education, Higher Apprenticeship or employment. Employment opportunities could include becoming a primary school teacher, early years practitioner, nanny, crèche worker, youth worker or family support worker. Careers in which an early years degree are beneficial include:

- Children's Psychotherapist
- Paediatric Nurse
- Children's Social Worker
- Special Educational Needs Teacher



## KAYDA RYAN

EARLY YEARS CHILDCARE STUDENT

"I enjoy my childcare lessons at Worsley College because of the teachers that share their expert knowledge with us. I especially love learning about the development of younger children as this will help me achieve my goal of becoming a primary school teacher."

# HAIRDRESSING, BEAUTY THERAPIES & MEDIA MAKE-UP

## COURSES AVAILABLE:

LEVEL	COURSE TITLE	DURATION	ENTRY REQUIREMENTS
Entry	Passport to Hair & Beauty	1 Year	No formal qualifications needed but must have a keen interest in the hair and beauty sector
Level 1	Hairdressing	1 Year	Four GCSEs at Grade 2 including English language and maths, and have a passionate interest in hair and beauty
Level 1	Introduction to Hairdressing or Beauty Therapy	1 Year	Four GCSEs at Grade 2 including English language and maths, and have a passionate interest in hair and beauty
Level 2	Diploma in Beauty Therapy	1 Year	Progression from a Level 1 programme or have at least three GCSEs at Grade 4 or above (two of which must be English and maths)
Level 2	Hairdressing	1 Year	Progression from a Level 1 programme or have at least three GCSEs at Grade 4 or above (two of which must be English and maths)
Level 2	Media Make-up	1 Year	Progression from a Level 1 programme or have at least three GCSEs at Grade 4 or above (two of which must be English and maths)
Level 2	Barbering	1 Year	Progression from a Level 1 programme or have at least three GCSEs at Grade 4 or above (two of which must be English and maths)
Level 3	Hairdressing	1 Year	Progression from a Level 2 Hair or beauty course or have industry related experience and GCSEs in English and maths at Grade 4 or above
Level 3	Beauty Therapy	1 Year	Progression from a Level 2 Hair or beauty course or have industry related experience and GCSEs in English and maths at Grade 4 or above





At Worsley College, we have outstanding salons equipped with industry standard equipment to prepare you for future employment within the industry. We work closely with industry experts and brands to ensure that we are using the latest techniques, equipment, and products. Our modern, real life working salons will provide you with the opportunity to work on live clients. The salon is open to members of the public for haircuts, colours and beauty treatments using exclusive salon ranges.

### WHAT WILL I STUDY?

#### BEAUTY THERAPY

If you wish to study beauty units may include:

- Facial skincare
- Nail treatments
- Hair removal
- Body massage
- Self-tanning
- Facial and body electrotherapy treatments

#### HAIRDRESSING/BARBERING

If you decide to study hairdressing depending on your level, the types of skills you will cover will include:

- Shampooing and conditioning hair
- Styling and dressing hair
- Colouring hair
- Perming and cutting techniques
- Client consultation and reception duties
- Styling men's hair
- Male grooming techniques

#### MEDIA MAKE-UP

If you wish to study media make-up you may cover the following techniques and skills:

- Period make-up
- Natural, party, fashion and beauty make-up
- Special effects such as ageing techniques
- Body painting
- Business management and freelancing
- Skills development and portfolio building

### HOW ARE THE COURSES ASSESSED?

You will be assessed through practical assessments, online exams and assignments. During your studies you will build a portfolio of evidence.

### WHAT COULD I DO NEXT?

Many students gain employment as hairdressers or beauty therapists in salons, leisure centres and on cruise ships or become self-employed. Some students choose to undertake further study in areas such as salon management or teaching. Media make-up students who successfully complete this course may choose to progress onto other make-up, prosthetics and animatronics techniques. Other students may choose to seek employment within the beauty, fashion, media or photographic industries.



### LEE COLLINGE

CURRICULUM LEADER FOR HAIR,  
BEAUTY & MEDIA MAKE-UP

"I started my teaching career 25 years ago and have experience of teaching in a variety of fields such as beauty therapy, fitness, nutrition, and dance. What I love most about teaching is the opportunity I have to bring out the best in people and to influence young people in a positive way."



## Aspirations AT Worsley

HAIR & BEAUTY SALONS



**ASPIRATIONS IS OUR ON-SITE, MODERN, HIGH SPECIFICATION, HAIR AND BEAUTY SALON, WHICH IS OPEN TO THE PUBLIC.**

Aside from providing excellent treatments and services to the local community, the salons are excellent training facilities that allow our students to learn in a realistic working environment and fully prepare them for working life. Students doing apprenticeships also train and work in the salons, further building on their skills.

Staff, other students and members of the public can book appointments for both hair and beauty treatments throughout the week. Treatments range from hair styling, colouring, perming and cutting to manicures, pedicures, facials, waxing, eye treatments, body toning and body massage. This gives students the opportunity to get real-life hands-on experience and for clients to get professional services at very reasonable prices.

On top of this, the college supports many charities by hosting pamper days throughout the year.

All the products used in the salons are high-end, quality products, whether they are Wella products for hairdressing, Kaeso or Love your Skin beauty products. Students also have the opportunity to attend guest lectures, masterclasses, and go on trips and visits with highly sought after brands and companies such as these.



**TO BOOK AN APPOINTMENT CALL 0161 631 5150**

**Our salons are open for a range of treatments and services by appointment between Monday and Friday at lunch time and Tuesdays and Thursdays in the evening.**



## BEAUTY TREATMENTS

- Facial
- Deluxe Facial
- Advanced Facial
- Make-up
- Back Massage
- Full Body Massage
- Advanced Massage
- Spray Tan
- Lip & Chin Hair Removal
- Half Leg Hair Removal
- Full Leg Hair Removal
- Bikini Hair Removal
- Underarm Hair Removal
- Manicure
- Pedicure
- Deluxe Manicure
- Deluxe Pedicure
- File and Polish
- Eyebrow Shape
- Eyebrow Tint
- Eyelash Tint
- Lashes



---

## HAIR SALON SERVICES

- Shampoo & Blow Dry
- Shampoo & Set
- Cut & Style
- Dry Cut
- Short Hair Perm & Style
- Long Hair Perm & Style
- Semi-Permanent Colouring
- Quasi Colour
- Permanent Colouring
- Cap Highlights
- Foil Highlights

TO BOOK AN APPOINTMENT CALL  
**0161 631 5150**



# HEALTH & SOCIAL CARE

## COURSES AVAILABLE:

LEVEL	COURSE TITLE	DURATION	ENTRY REQUIREMENTS
Level 1	Health & Social Care	1 Year	Four GCSEs at Grade 2 including English language and maths
Level 2	Health & Social Care	1 Year	Four GCSEs at Grade 3 or above including English and maths plus Level 2 Functional Skills in English and maths
Level 3	Health & Social Care	2 Years	Five GCSEs at Grade 9-4 or a Merit in a relevant Vocational Level 2 Diploma (or equivalent)





These courses are designed to cover a range of topics, providing you with the knowledge and skills required for a career or further study in the healthcare or social care industry. You will benefit from your teachers having a wide range of expertise and specialisms. You will complete mandatory work experience at level 3 with a minimum of 100 hours in a range of health and social care settings.

### WHAT WILL I STUDY?

A range of units across both the health and social care sectors including:

- Physiological disorders
- Working in the health sector
- Dealing with challenging behaviour
- Caring for children and young people
- Infection prevention and control
- Complementary therapies for health and social care
- Caring for individuals with additional needs
- Introduction to counselling skills plus many more

### WHAT COULD I DO NEXT?

Studying this extensive health and social care qualification can lead to a wide range of potential career options including health sector roles such as a nurse, dental nurse, occupational therapist, midwife/health visitor, radiographer/radiologist, physiotherapist, health care assistant, counsellor or dietician. Alternatively, social care sector roles include social worker, support worker, care assistant, counsellor, teaching assistant, youth worker and intervention worker.

### HOW ARE THE COURSES ASSESSED?

The courses are assessed predominantly by coursework but there may be some examination assessments depending on your level of study.

### WHAT ENRICHMENT WILL THERE BE?

- Trips will include visits to local hospitals, the Disabled Living Centre and Thackray Medical, Blackpool Zoo and the North West Ambulance Service
- Visiting industry experts who will explore a range of topics and share their expertise
- Completion of practical sessions in our brand-new health laboratory facilities; including manual handling training and basic first aid
- Fundraising activities such as Macmillan Coffee Mornings, Children in Need, Salford Foodbank and many more



## DONNA BRADLEY

CURRICULUM LEADER FOR VOCATIONAL PROFESSIONS

"I love teaching more than anything. It's gives me the opportunity to teach young people what I am passionate about and share my knowledge to inspire them. Teaching is not just standing in front of a group of students sharing knowledge - you teach more than the subject, you teach life skills and every student deserves an opportunity to be able to become the best they can possibly be."



# HOSPITALITY & CULINARY ARTS

## COURSES AVAILABLE:

LEVEL	COURSE TITLE	DURATION	ENTRY REQUIREMENTS
Level 1	Professional Chef & Restaurant Skills	1 Year	Four GCSEs at Grade 2 including English language and maths, and have a passionate interest in Hospitality
Level 2	Professional Chef & Restaurant Skills	1 Year	Progression from a Level 1 programme or have at least three GCSEs at Grade 4 or above (two of which must be English and maths)
Level 2	Patisserie & Confectionery Excellence	1 Year	Progression from a Level 1 programme or have at least three GCSEs at Grade 4 or above (two of which must be English and maths)
Level 3	Advanced Professional Chef	1 Year	Progression from a Level 2 programme or have industry related experience and GCSEs in English and maths at Grade 4 or above
Level 3	Advanced Patisserie & Confectionery Excellence	1 Year	Progression from a Level 2 programme or have industry related experience and GCSEs in English and maths at Grade 4 or above

Courses in these subject are available with us up to university level.





Hospitality and culinary arts is one of the world's fastest growing industries and here at our Centre of Excellence you will be encouraged to explore the industry and discover all it has to offer. The department is at the forefront of teaching and learning within this exciting and prosperous sector. Our highly experienced and inspirational teaching staff will provide you with endless opportunities to develop your skillset, including the development of strong employability skills that will help you pursue your dreams and achieve your future aspirations.

### WHAT WILL I STUDY?

If you decide to study the **Professional Chef's** course, you will learn all of the basic skills necessary for gaining employment as a professional chef or food and beverage manager. You will develop your abilities in:

- The complex skills required for the preparation and cooking of meat and fish, hot and cold sauces, vegetables, vegetarian dishes, and fresh egg pasta
- Cooking techniques and skills, adopting the latest high street trends with specialist equipment
- Key bakery skills including all types of breads and doughs
- The intricate skills used in the creation, development and presentation of menus and dishes for The Glass House at Worsley
- Managing a restaurant environment and developing strong customer service skills

If you choose to study a **patisserie and confectionery** course, you may cover:

- The production of dishes using various doughs, pastry, sponges, biscuits, hot and cold desserts, sauces, fillings, and accompaniments, chocolate decorations
- Learning and developing a vast range of baking and cake making skills including shortcrust, sweet and puff pastry, cookies, shortbread and cupcakes
- Designing and creating new dishes for The Glass House at Worsley, whilst enjoying the realistic work place of the busy training restaurant
- Learn exciting and innovative retail aspects of making and selling cake

### HOW ARE THE COURSES ASSESSED?

These courses will be assessed through practical exams and short written theoretical assessments. Customer feedback and teacher observations and a logbook of picture evidence also contribute to the assessment of these qualifications.

### WHAT ENRICHMENT WILL THERE BE?

- Guest chocolate and confectionery masterclasses
- Visits to chocolatiers and confectioners
- Participation in local and national competitions
- Gaining work experience in high profile, award-winning establishments
- Regular internal competitions
- Visits to the Cake and Bake Show
- Guest chef masterclasses

### WHAT COULD I DO NEXT?

All our qualifications lead to careers in hotels, restaurants, cruise line job roles, owning and running your own business, Armed forces, gastro pubs and carvery establishments. You will also take part in planned work experience that will potentially open a wide range of opportunities with industry partners and outstanding establishments. You will also have the option to progress your learning to higher levels with us at the College, should you wish to do so.



## REBECCA DUCKWORTH

### HOSPITALITY & CULINARY ARTS STUDENT

"My favourite thing about the course is the fact we get hands on industry experience. After I finish the course, I am going on to study further with the University Centre at Salford City College and complete my Level 4 qualification."

# THE GLASS HOUSE AT WORSLEY



THE GLASS HOUSE AT WORSLEY IS A SPECIALIST TRAINING RESTAURANT FOR THE HOSPITALITY AND CULINARY ARTS DEPARTMENT AT WORSLEY COLLEGE.

The industry-standard restaurant and kitchen offers practical and real-life experience for students, giving them an advantage when applying for future employment. The restaurant has been open for many years for local people to come and enjoy the fine-dining experience within a bright and contemporary environment.

The restaurant is run by our dedicated hospitality and culinary arts students under the supervision of their expert teachers who have worked in some of the best-known hotels and restaurants in the country. Students design, prepare and serve menus for either two or three course lunches and dinners.

We can seat up to 65 people and are available for private parties of 30 or more, with menus designed around customers' specific requirements. Throughout the year we organise special themed evenings which are hosted by our talented students.

**FOR MORE INFORMATION VISIT:**  
[www.theglasshouse.salfordcc.ac.uk](http://www.theglasshouse.salfordcc.ac.uk)

#### OPENING TIMES:

##### LUNCH

Thursday, 12.00 – 2:30pm (last food orders at 1.15pm)

Friday 12.00 – 2.30pm (last food orders at 12.45pm)

##### DINNER

Thursday, 6.00 – 9.30pm (last food orders at 7.15pm)

Afternoon tea, specialty dinners and lunches are regularly planned. Please visit our website for further information and updates







# “THE FOOD AND SERVICE WAS OF THE HIGHEST STANDARD.”



## WHAT OUR CUSTOMERS SAY...

The Glass House at Worsley has an outstanding local and regional reputation. As a hospitality and catering student at Worsley College you will be given the opportunity to learn from the best and contribute to the restaurant’s enduring reputation for outstanding food and high-quality service.



Here are just a few of the commendations and positive reviews that we have received from our customers:

“A triumph! We had the pleasure of visiting The Glass House for the first time last night, having only just discovered it for the seven-course tasting menu as part of the celebration of Salford Food Fortnight. And what a meal it was! A true feast. It could have graced any of the city centre restaurants.”



“Our family have been enjoying monthly meals out at The Glass House for some time. Last night, as always, we had the pleasure of enjoying stunningly prepared, varied and very tasty food at very reasonable prices.”

“Had a great evening here; the food and service was of the highest standard. All of the students should be very proud of themselves indeed.”

“The food was fabulous with plenty of choice, as was the service. Prices are really good too but you must pre-book as this is very popular.”

“This is the best afternoon tea we have ever had and The Glass House certainly holds its own against competition in the city centre of Manchester!”

“Very good service, food superb!”

“Lovely evening, loved every second, amazing food and excellent service.”

“Simply the best, we were very well looked after, fantastic food and outstanding service. We will tell all of our friends and we will definitely be back, thank you!”

“These are the chefs of tomorrow and what a job they are doing.”

“The food and service was of the highest standard.”

**APPLY  
NOW!**

**WEEKLY  
FINANCIAL  
SUPPORT**

**FREE  
LUNCH AND  
REFRESHMENTS\***

**COURSE  
START DATE  
ACROSS THE  
YEAR**

**PASSPORT  
TO  
COLLEGE**



**START**  
9:30AM

**FINISH**  
3:30PM

Our 12 week Passport to College course is for students aged 16-18. You will be in college for three days per week.

**ON THE COURSE YOU WILL:**

- Develop your skills and build your confidence
- Achieve an Entry Level or Level 1 vocational related qualification
- Improve your English and maths
- Cover units such as; planning and running an enterprise activity, producing a product, planning a trip, planning your own fitness programme, managing your money and career progression
- Develop your employability skills and offer you a pathway to further education and employment

\*Subject to eligibility

If you are unsure of which college course to study, this programme will give you an opportunity to gain an insight into a variety of courses at the college. On completion of the course, you will be supported onto a positive next step.





# Team programme

THE PRINCE'S TRUST

16 - 25  
YEAR OLDS

FREE  
LUNCH\*

WEEKLY  
FINANCIAL SUPPORT

FREE BUS  
TRAVEL\*



This FREE 12-week Prince's Trust Team Programme is designed to help young people uncover their hidden talents, improve confidence and gain a nationally recognised qualification. If you are unemployed and aged between 16 and 25 you can meet new people, gain new skills, and train on our team programme.

THE ROAD TO  
UNCERTAINTY

THE ROAD TO  
APPRENTICESHIPS,  
EMPLOYMENT &  
FURTHER TRAINING

\*Subject to availability

## WHEN YOU COME ON BOARD, YOU'LL BE CHALLENGED TO:

Take on your own group community project, make a positive difference to your local community and:

- Take part in an action packed residential trip
- Get two weeks' work experience in something you are really interested in
- Develop your English and mathematics skills

### DAY 1: MEET NEW PEOPLE

Don't worry about turning up on your own; there will be other people joining and everyone will be in the same situation. It will be informal and there are plenty of activities, so you will soon feel part of the group.

### WEEK 1: TAKE ACTION

Over this week, you will start planning for the weeks ahead, setting out what you want to achieve, and finding out how to get your qualifications.

### WEEK 2: NEW EXPERIENCES

You will spend this week away, trying new things and learning how to work with others. This gives you a chance to break away from your current situation. Try canoeing, climbing, raft-building, and much more.

### WEEKS 3-6: COMMUNITY PROJECT

As a team, you will decide on a project to benefit your local community and carry it out. This gives you a great experience to discuss at interviews.

### WEEKS 7-8: WORK PLACEMENT

This is the time to see how the skills you have developed so far can help you in the workplace. It's also a great chance to try out a type of work, or company, to see whether you like it. This is also an opportunity to gain a part-time job if you can impress.

### WEEK 9: PLAN FOR THE FUTURE

You will get help to write a fantastic CV, practice your interview skills, and write job applications.

### WEEKS 10-11: MEET THE CHALLENGE

You and your team will take on a challenge to help others in the community. This is when you get to test out all the skills you have developed.

### WEEK 12: HAVE YOUR SAY

In your final week, you will deliver a presentation. This will give you the chance to show off the talents you have discovered. This may sound scary now but after 12 weeks you will be surprised at how far you have come.

COURSES AVAILABLE ALL YEAR, EVERY 12 WEEKS

ENROL WITH US NOW!

On achievement of the Prince's Trust Team Programme, you will be supported onto your next step.



# ENGLISH & MATHEMATICS

If you do not have a grade C/4 in GCSE English or mathematics when you come to study with us, then you will be enrolled onto a course to help you improve in those areas. We have an excellent English and mathematics department to guide you through your GCSEs or functional skills depending on your individual requirements.

It may be that English and mathematics have not worked out for you so far, but our staff are experts in teaching them to 16–18 year olds, so they build on the knowledge and skills that you already have, while approaching them in a fresh and engaging way. We know you have taken these GCSEs already, and you don't want the same lessons again, so we create lessons that will help you be better prepared to tackle the demands of the exams. These lessons will be built into your study programme at Worsley College.

## WHY DO I NEED ENGLISH AND MATHEMATICS?

English and mathematics are considered corner stones of education and training in the UK and level 2 in these subjects is considered a pre-requisite for many courses and careers. The skills required to do well in these subjects are valued highly, and that's why they are a necessary part of college study.

You will often hear that communication skills are vital in the modern workplace and it's through studying English language that you will develop these skills. If you read some text, do you know what the writer is trying to say? Can you infer meaning? Can you pick up on tone and compare it with a different one on the same subject?



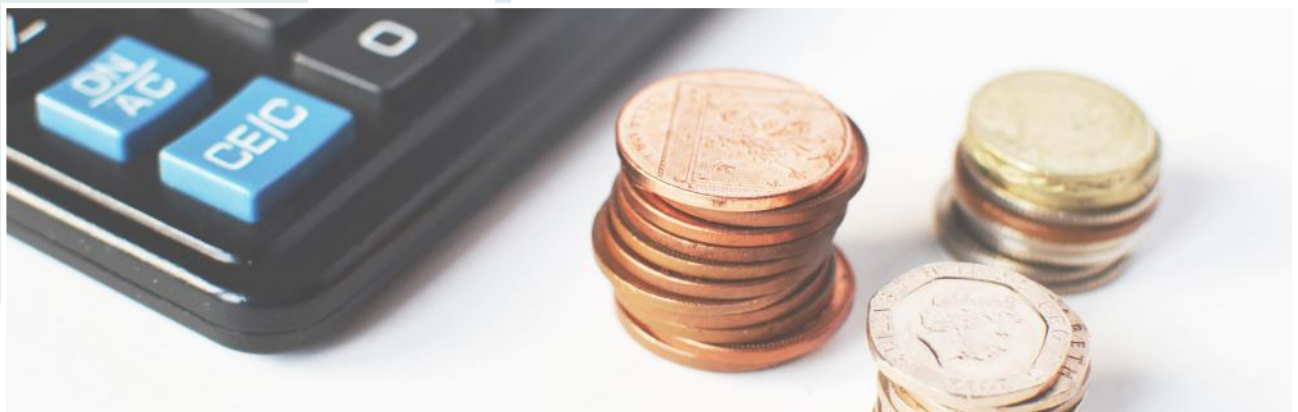
Employers want people who can communicate effectively, but they also want people who can think logically and solve problems. That is, in essence, what mathematics is – problem solving. The skills you learn in mathematics are often useful in everyday life, but it's how you get the answer, rather than the answer itself that make mathematics qualifications so highly regarded.

FUNCTIONAL SKILLS ENGLISH

GCSE ENGLISH

FUNCTIONAL SKILLS MATHEMATICS

GCSE MATHEMATICS







# APPRENTICESHIPS AT SALFORD CITY COLLEGE



## BECOME AN APPRENTICE

We are a leading provider for apprenticeships in Greater Manchester. Supporting around 1,500 apprentices and 450+ employers in the region the opportunities available are extensive and the skills you will learn are highly sought after by industry.

We have a fantastic team of specialist, apprenticeship delivery staff. They work across the region supporting apprentices in the workplace. In addition, the Apprenticeship Support Team are also in place to help apprentices who need support.

Our training and assessment develops the apprentice's knowledge, skills and behaviours aligned to both their needs and those of the employer. Training is at least 20% of an apprentice's working time across the duration of the programme. This is agreed with the employer and takes place off the job.

Our delivery methods include a blend of one-to-one support, guidance and workplace assessment, online training, workshops, self-directed study and workbooks.

Time-scales for apprenticeship delivery range from 18 months to two years depending on the individual apprenticeship and include support with English and maths from trainers and dedicated teachers, depending on your needs. This support is delivered one-to-one in the workplace to suit you and your employer.

We will work with apprentices to find a suitable employer and help them earn while they learn.

## SOME OF OUR PROUD PARTNERS...



Salford City Council



La Bonita Beauty

Salford Royal NHS  
NHS Foundation Trust

M&S  
EST. 1884

## WHAT WE OFFER

We offer apprenticeships in a range of sectors including health and social care, education and early years and business, professional and finance. There are many possible career paths from these fantastically delivered apprenticeships, including:

- Business, Professional & Financial Services
- Construction & The Built Environment
- Education & Early Years
- Health & Social Care
- Hospitality, Retail, Hair & Beauty

**WANT TO BE OUR NEXT APPRENTICE?  
CALL US NOW 0161 631 5555**

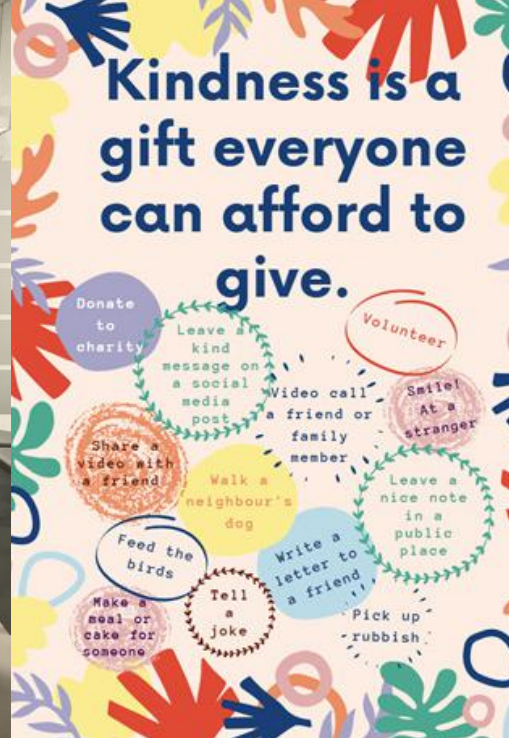


# LIFE AT WORSLEY COLLEGE



## Make Your Mark

Design your own square to brighten up our fitness space. Paint doodle or whatever you like!



## Top Sleep Tips

Young people should get 8-10 hours of sleep every night for physical and mental health.

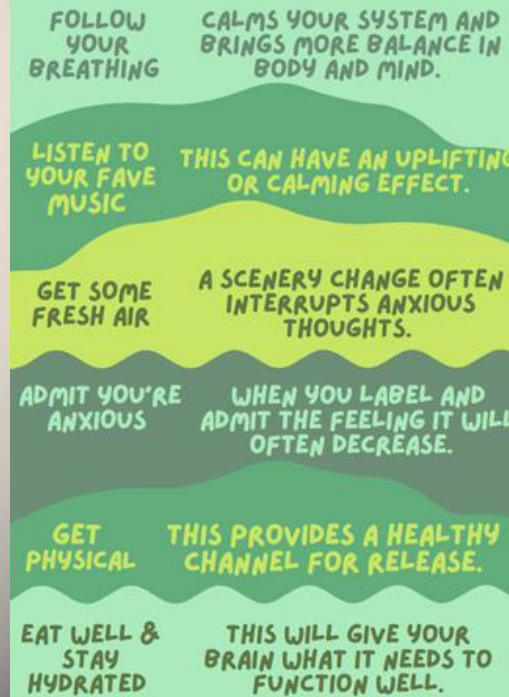
Stay away from electronics at least 30 mins-1 hour before bedtime. Light exposure from screens disrupts sleep cues.

Create a nice environment to sleep in. Preferably a dark, cool and quiet place that you feel comfortable in. Don't spend all day/night relaxing in your bed, just get in bed when it is time to sleep.

Avoid caffeine. If you do have caffeinated / energy drinks. Try not to have them after dinner time.

Follow a sleep schedule: Have a regular bed time and wake up time, even on the weekends.

Be active. Daily exercise will help to tire the body and sleep will come more naturally. 30 minutes a day can help, even if it's just a walk.



Settle into a comfortable position. Close your eyes and begin to breathe.

Imagine a cloud filled sky, the sky is crowded and busy like sometimes the mind can be.

Your breath is like a strong wind that can gently clear the sky and settle the mind.

With each out-breath imagine that the clouds begin to part and disperse. Each exhale clears a little more of the sky.

Keep doing this until you can imagine the sky has been cleared of clouds.

*Mindful moments with Sarah*





# TRAVELLING TO COLLEGE

Worsley College is located a short distance from the Ellesmere Shopping Centre and Walkden train station. The college can be accessed by car, public transport (including bus, train and tram) and the FREE\* college buses we provide.



## COLLEGE BUSES

Pay an administration fee per term for your annual permit and then travel on the college buses all year for free. The college runs a number of dedicated bus routes from many areas in Greater Manchester including:

ALTRINCHAM	BOOTHSTOWN	CULCHETH	LEIGH	STRET福德
ASTLEY	BROUGHTON	DAVYHULME	LEVENSHULME	TYLDESLEY
ATHERTON	BURY	FARNWORTH	LITTLE HULTON	URMSTON
BELLE VUE	CADISHEAD	FLIXTON	LOSTOCK	WALKDEN
BLACKLEY	CHEETHAM HILL	HARPER GREEN	MIDDLETON	WESTHOUGHTON
BOLTON	CHORLTON	IRLAM	PEEL GREEN	WORSLEY

View our bus leaflet online at [www.salfordcc.ac.uk/student-services/college-bus-service/](http://www.salfordcc.ac.uk/student-services/college-bus-service/)

### OUR COLLEGE BUSES ARE:

- Only for our students, so you have a safe and comfortable journey
- Provided by local companies, who have operated the service for many years

### CAR

If you are driving to college, we have a FREE car park.

### PUBLIC TRANSPORT

You can plan a direct route from your home! Visit [www.tfgm.com](http://www.tfgm.com) or we can discuss this with you at your college interview or enrolment.



# APPLICATION PROCESS

## ENTRY REQUIREMENTS

Students are required to have five grade 4s at GCSE, including English and maths. Intermediate level courses require four grade 3s at GCSE. Foundation level courses require 1/2s at GCSE. Please note some courses may require students to meet additional entry requirements; this will be outlined at the admissions interview. See the individual course pages in this guide for specific course entry requirements.

## FINDING OUT

Find out more about us from the following:

- School careers advisors
- School career days and presentations
- Careers information advice and guidance
- Social media
- Website
- Our School Liaison and Admissions Team

## INTERVIEW

You will be invited to an interview at your school or at Worsley College.

What to expect:

- Questions about your interests
- Future ambitions
- Opportunity to ask questions and discuss courses

## APPLICATION FORM

Complete the paper application in this guide or apply online at [www.salfordcc.ac.uk](http://www.salfordcc.ac.uk). Please ensure you keep your contact details up-to-date with us so we can send information out to you electronically.

## ACKNOWLEDGEMENT

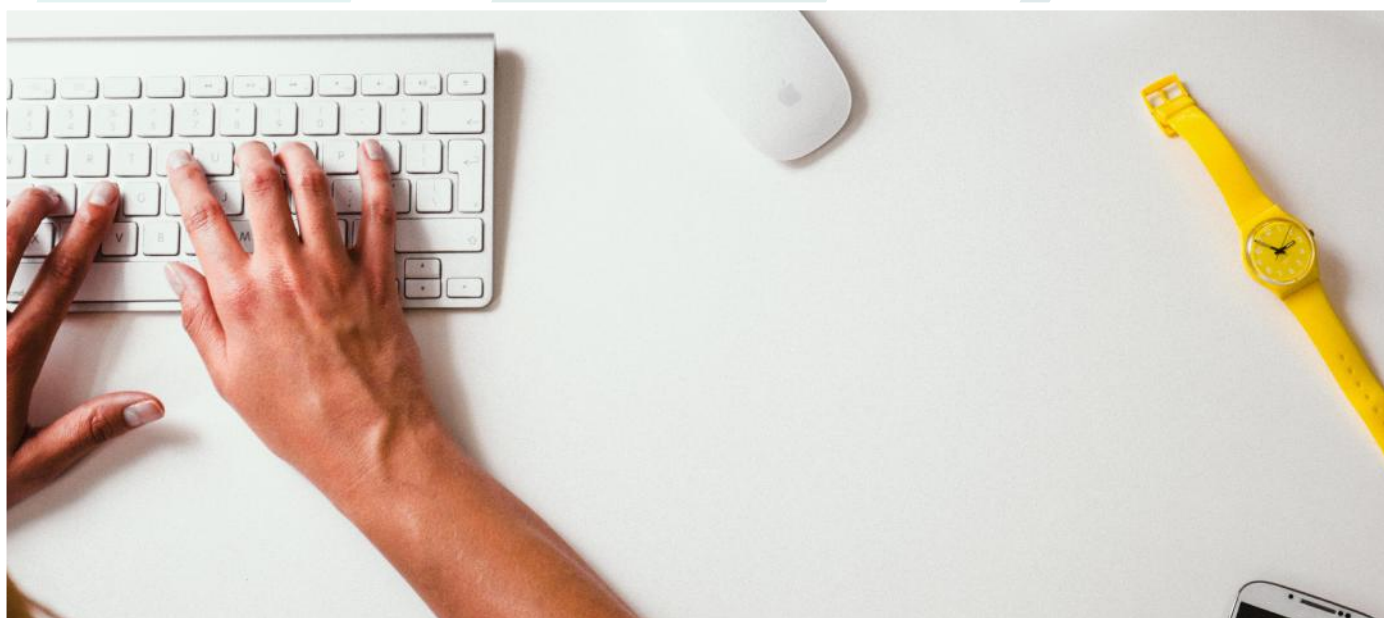
Once you have applied, you will receive an acknowledgment letter to say we have received your application.

## OPEN EVENTS

Come and experience Worsley College for yourself. See the amazing facilities, meet current students and staff and learn more about the courses. See our website for details of our next open events.

## OFFER

If your interview is successful you will be offered a place on your chosen programme of study. You will then receive a letter confirming your offer and details will follow on New Students' Day and enrolment.





Please return the completed Application Form to:  
 Head Office, Admissions, Pendleton Sixth Form College, Dronfield Road, Salford, M6 7FR

# Application Form

If you require help completing this Application Form or require it in other formats or languages please contact Admissions on 0161 631 5000.

<b>FOR OFFICE USE ONLY</b>		ID: <input style="width: 150px; height: 20px;" type="text"/>
Date received: <input style="width: 150px; height: 20px;" type="text"/>	Date acknowledged: <input style="width: 150px; height: 20px;" type="text"/>	
Interview date/time: <input style="width: 150px; height: 20px;" type="text"/>	<input style="width: 150px; height: 20px;" type="text"/>	<input style="width: 150px; height: 20px;" type="text"/>

Please complete in BLOCK CAPITALS

Surname _____ First Name _____ Middle Name _____ Preferred Name _____ Date of Birth _____ Male/Female (please circle) _____ Address _____ _____ Postcode _____	Student Tel. _____ Student Mobile _____ E-mail (please note your application can not be processed without an email): <input style="width: 100%; height: 20px;" type="text"/> <input style="width: 100%; height: 20px;" type="text"/> Names of Parents/Guardians _____ Parent/Guardian Tel. _____ High School Attended/Attending _____ _____ Date of Leaving (Month/Year) _____
--	---

Do you have a physical or learning disability which we may be able to help you with?  
 (If you tick 'yes' Additional Learning Support will contact you to discuss your needs) Yes  No

Have you been resident in the UK or EU for the past three years? Yes  No

Are you in care or a care leaver? Yes  No

If you have a physical or learning disability, or an EHCP which we may be able to help you with, or you require extra support, tick this box. Student Services will contact you to discuss your needs.

Ethnicity

11 Asian/Asian British - Bangladeshi	19 Mixed - White & Asian
12 Asian/Asian British - Indian	20 Mixed - White & Black African
13 Asian/Asian British - Pakistani	21 Mixed - White & Black Caribbean
14 Asian/Asian British - Other Asian Background	22 Mixed - Other Mixed Background
15 Black/Black British - African	23 White - British
16 Black/Black British - Caribbean	24 White - Irish
17 Black/Black British - Other Black Background	98 Other Background
18 Chinese	







# NOT FOUND WHAT YOU ARE LOOKING FOR? LOOK AT OUR PARTNER COLLEGES IN YOUR AREA



## Apprenticeships at Salford City College

We offer outstanding apprenticeship provision, with success rates significantly above the national average!  
Contact us today - we work with apprentices to find the right employer - earn while you learn!

0161 631 5555 | [apprenticeships@salfordcc.ac.uk](mailto:apprenticeships@salfordcc.ac.uk)

[f](#) /SCCApprenticeships [t](#) @SCC\_Apprentices [i](#) @SCCApprenticeships



## City Skills

Vocational Courses & Apprenticeships

What we offer?

Construction | Electrical Installation | Plumbing | Motor Vehicle Studies  
Civil Engineering | Carpentry & Joinery | Painting & Decorating | Multi-Trade

Frederick Road | M6 6QH | 0161 631 5000 | [enquires@salfordcc.ac.uk](mailto:enquires@salfordcc.ac.uk)

[f](#) /CitySkillsSCC [t](#) @CitySkillsSCC [i](#) @CitySkillsSCC



## Eccles Sixth Form College

Vocational Courses, Vocational A-levels, Apprenticeships & Higher Education

What we offer?

Animal and Equine | Business and Professional | Childcare | Health & Social Care | Sport & Public Services  
Skills for Life | Travel & Tourism

Chatsworth Road, Eccles, M30 9FJ | 0161 631 5000 | [enquires@salfordcc.ac.uk](mailto:enquires@salfordcc.ac.uk)

[f](#) /EcclesSixthFormCollege [t](#) @EcclesSFCollege [i](#) @EcclesSixthFormCollege



## FutureSkills at MediaCityUK

Vocational Courses, Apprenticeships & Higher Education

What we offer?

Creative Media | Creative Music | Games Design | IT & Computing | Journalism | Media Make-up |  
Professional Construction

Dakota Avenue, M50 2PU | 0161 631 5000 | [enquires@salfordcc.ac.uk](mailto:enquires@salfordcc.ac.uk)

[f](#) /FutureSkillsatMediaCityUK [t](#) @FS\_MediaCityUK [i](#) @FutureSkillsatMediaCityUK



## Pendleton Sixth Form College

A Centre of Academic Excellence | A-Levels & Vocational Courses

What we offer?

ICT | Computer Science | Maths | Art & Design | Economics | Science | English | Performing & Production Arts

Dronfield Road, M6 7FR | 0161 631 5000 | [enquires@salfordcc.ac.uk](mailto:enquires@salfordcc.ac.uk)

[f](#) /PendletonSixthFormCollege [t](#) @PendSFCollege [i](#) @PendletonSixthFormCollege



# OPEN EVENTS FOR SCHOOL LEAVERS

.....  
VISIT OUR WEBSITE TO FIND OUT ABOUT OUR NEXT OPEN EVENTS.  
.....

**For more information, call Admissions on 0161 631 5000 or visit [www.salfordcc.ac.uk](http://www.salfordcc.ac.uk)**

All information is correct at the time of print. We reserve the right to make changes to any of the information printed. If you require in other formats please ask.

**Worsley College | Walkden Road | Worsley | M28 7QD**

